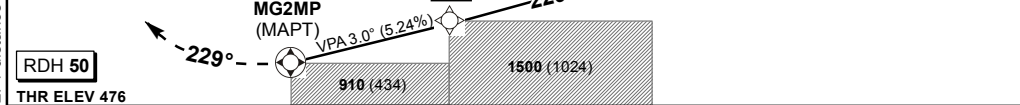


Distance from THR 23	4	3	2	1		
ADVISORY ALT(HGT)	1800 (1324)	1490 (1014)	1170 (694)	850 (374)		

TRANSITION ALT 5000
 TRANSITION LEVEL ATC
 INA ALT 5000

MISSED APPROACH:
 Climb to 3800' ALT. Maintain RWY track to MG2M1. At MG2M1 turn left to MG2M2. At MG2M2 turn left to EVURU, hold or as directed by ATC.



THR ELEV 476																
NM to/from THR RWY 23	0	1	2	3	4	5	6	7	8	9	10	11	12	13	14	15

Straight-in Approach	MIN TEMP: 0°C	A	B	C	GS	KT	80	100	120	140	160
	LNAV	910 (434)	910 (434)	910 (434)	FAF to MAPT	M:S	3:00	2:24	2:00	1:42	1:30
	LNAV/VNAV	840 (364)	840 (364)	840 (364)	Rate of descent	FPM	425	531	637	743	849
NOTE:											
Circling		1140 (642)	1310 (812)	1490 (992)							